



PREVENTING INFECTION >%99.9999  
is as **EezzeE**  
with Sanitise Ireland



SANITISE IRELAND IS AN IRISH DISTRIBUTOR FOR  PRODUCTS

ENSURING A **SANITISED ENVIRONMENT**

Sanitise Ireland introduces

# EezzeE Aquazzee

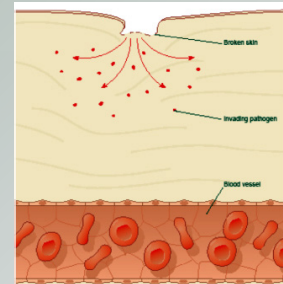
EezzeE™ INFECTION CONTROL SYSTEM



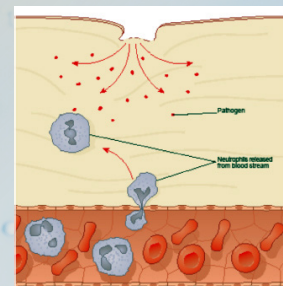
**EezzeE**™

## HUMAN DEFENCE MECHANISM

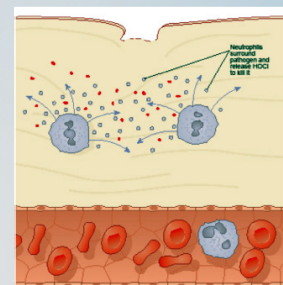
- Bacteria get under the skin
- Neutrophils (a type of white blood cell) are released from the blood stream and via a chemotaxis process migrate to the bacteria
- The neutrophils surround the bacteria
- The neutrophil secretes an enzyme - NADPH oxidase which decays to produce  $H_2O_2$
- The neutrophils surround the bacteria
- The neutrophil secretes an enzyme - NADPH oxidase which decays to produce  $H_2O_2$
- $H_2O_2 + NaCl$
- $HOCl + NaOH$
- HOCl is one of the most efficient biocides known
- Approx 300 times more effective than NaOCl
- Unstable molecule hence NaOCl



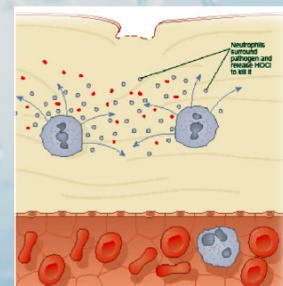
01



02



03

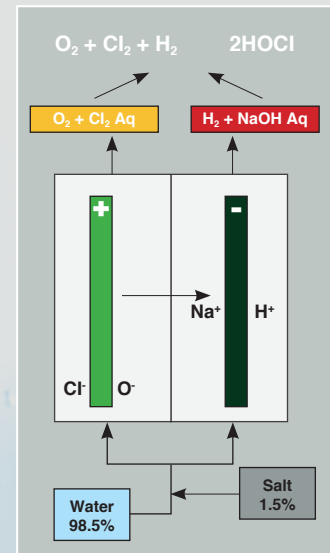


04



## THE TECHNOLOGY

- Combination of electrolysis and ion exchange technology
- Softened water plus salt (NaCl)
- Ability to buffer to any pH (within reason)
- Approx 130 ppm HOCl
- Can be produced in-situ or packaged



## PRODUCT CONCEPT

- Significant body of work in our research demonstrating significant improvements in infection control can be implemented.
- Reduction or elimination of environmental and safety issues eg. problems of alcohol:
  - Fire hazard;
  - Patients drinking it;
  - Dry hands
- Significant investment (£4.3m) made in proof of principle, confirming the science, manufacturing and technology development.



## APPLICATIONS

- “Safer” Milton
- Hand Wash and Personal hygiene (suitable for both MRSA and C. diff)
- Air, Surface, Room Hygiene
- Wounds, Burns
- Laundry
- Flowers etc....



## RESEARCH STUDIES

- Surface Disinfection
- Airborne transmission
- Active wipes
- Hand Washing – Efficacy and acceptability





## HOSPITAL TRIAL PROTOCOL

- Surface Disinfection – Two units on Aquazzee\* for a week two units Johnson Diversey, then switch for the second week
- 100 sq cm sterile stencils provided for swabbing before and after cleaning
- Hand Washing, 20(ish) volunteers each trying a different method a week for 5 weeks. Soap, Alcohol, Soap and Alcohol, Aquazzee\* and Soap and Aquazzee\*
- Favoured hand swabbed before and after washing
- Surface Cleaning operations all done by the same person
- Sluice Door Handle
- Toilet Sink
- Hoist
- Room Work (Vanity) Top
- Commode Seat
- Hand Wash 22 people from 11 areas to give duplicate data



## TRIAL RESULTS\*

WEEK 1	AVERAGE REDUCTION (INCREASE) IN TVC AFTER CLEANING
Wards 1 & 2 (Aquazzee*)	<b>84,414</b>
Wards 3 & 4 (Johnson Diversey)	<b>28,737</b>

01

WEEK 2	AVERAGE REDUCTION (INCREASE) IN TVC AFTER CLEANING
Wards 1 & 2 (Aquazzee*)	<b>16,780</b>
Wards 3 & 4 (Johnson Diversey)	<b>11,794</b>

02





## SPEED OF ACTION OF SURFACE SPRAY

	PRE-SPRAY	0 MINS	3 MINS	6 MINS
DETTOL SURFACE CLEANER *	1,552,000	12,000	6,000	140
DETTOL MULTI-ACTION 4 IN 1	5,691,000	7,000	5,000	8,000
AQUAZZEE*	3,468,000	170	160	140

**\*\*Spray, leave 5 mins,** then wipe i.e. times are 5 mins, 8 mins, 11 mins

## SPEED OF ACTION OF SURFACE SPRAY

DAY	1	2	3	5	5
JD	100	93	102	99	97
Aq	100	86	105	60	80
Aq mist + spray	100	61	85	63	69
Aq spray + mist	100	68	66	84	57

Starting microbial load pre cleaning on 5 consecutive days.

With JD products the starting load comes back to the same level every day.

With Aquazee\* applications there is a significant reduction day by day, which is improved with environmental fogging!





## PRODUCT FORMATS

- Trigger Spray
- Hand Wash
- Wet Wipe
- Fog
- Larger containers for bulk use



## OTHER APPLICATIONS

- Denture Cleaning
- Wound Healing
- Diabetic Ulcers
- Hip Replacement
- Intra Abdominal Sepsis and Fistula
- Nebulising for lung and URT infections



## CONCLUSION

- Aquazzee is more effective as an infection control agent than the current products in use in care homes
- Well received by staff; eliminates urine odour, does not damage soft furnishings and helps maintain soft hands with none of the drying and cracking issues associated with alcohol hand washes.







Sanitise Ireland is an  
Irish distributor for products

**Safeguarding your living & working environment!**

**SANITISE IRELAND**

Unit 27, St. Patrick's Woollen Mills,  
Douglas,  
Cork, Ireland.

FOR FURTHER INFORMATION CONTACT:

**[www.sanitiseireland.ie](http://www.sanitiseireland.ie)**



**021 4874621**  
**[info@sanitiseireland.ie](mailto:info@sanitiseireland.ie)**